



PHOTONICS CLUSTER OPTITEC

OPTITEC : LEADING FRENCH DEEPTECH CLUSTER IN PHOTONICS & IMAGING

RANKED AMONG « TOP 5 » EUROPEAN DEEPTECH CLUSTERS IN PHOTONICS

- Federates photonics actors specialised in optics and imaging systems dedicated to **smart cities and intelligent mobility, industry 4.0, medical technologies, defense & security and precision agriculture** applications;
- **Headquartered in Marseille** (Provence-Alpes-Côte d'Azur region) with extensive outreach in the south of France via its **representative office in Toulouse** (Occitanie region) and **European office in Brussels**.





ID CARD

- Year of creation : **2 000**
- Type : Non-profit association
- Members : **220**
- Employees : **12**
- Membership diversity : **Industry** (SMEs, mid-caps, prime contractors), **laboratories** and **universities**
- Key mission : **Promotion and development** of **optics & photonics** activities in the south of France

MEMBERSHIP DIVERSITY ADDRESSING THE COMPLETE VALUE CHAIN



220 members

Companies

Research centers

Academic institutions



Mid-caps & primes

Thales Alenia Space, Thales
SESO , Thales Optronique,
Naval Group, Horiba, Bertin
Technologies, Cilas, ...



World renowned laboratories

CEA, ONERA, IRSTEA,
INRIA, CNR, Aix-Marseille &
Nice universities

OBJECTIVES

- **Regional/national level:**
to foster and promote activities of the photonics sector in the south of France and to strengthen the synergies between its stakeholders (research, higher education and industry sectors);
- **European level:**
to facilitate participation of its members in various EU research and development programmes, notably in Horizon 2020 and soon in the upcoming Horizon Europe programme;
- **International level:**
to facilitate SME members' internationalisation activities by organising dedicated pavilions in international trade fairs and setting-up trade delegations aiming to reinforce cooperation with third (non-EU) countries.

MISSIONS

- Extending the range of services to SMEs, from R&D to market
- Enhancing the synergy between SMEs and major industrial groups
- Encouraging the transfer of technologies from academic research to SMEs
- European office in Brussels



MISSIONS

Extending the range of services to SMEs, from R&D to market

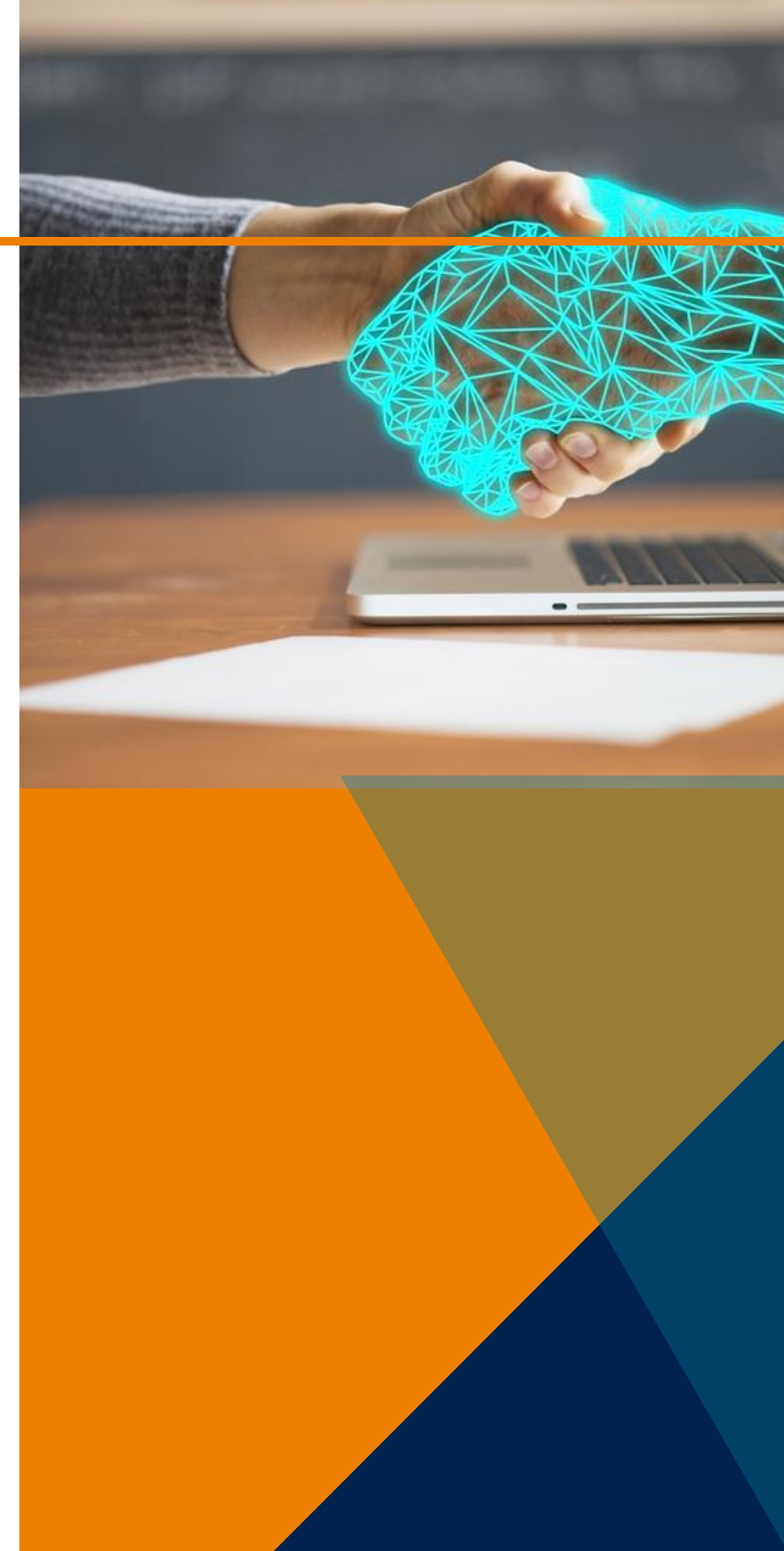
OPTITEC is building up its range of actions for companies by playing a role at the core of their strategy of development, R&D, funding, intellectual property, international outreach, competencies, etc. The support may be on both an individual and collective basis, encouraging joint projects between SMEs in order to be collectively more competitive on national and international markets



MISSIONS

Enhancing the synergy between SMEs and major industrial groups

For SMEs, OPTITEC plays the role of interface with the major groups and outsourcers in the photonics sector and beyond, with the aim of building up technological and business partnerships



MISSIONS

Encouraging the transfer of technologies from academic research to SMEs

OPTITEC has strong links with academic research, a strong driver behind the high level of R&D in the cluster's SMEs and one of the key factors with regards to the future markets



MISSIONS

European office in Brussels

In 2014 OPTITEC consolidated its offer of services linked to European funding programmes by appointing a full-time representative in Brussels for the purpose of representation, intelligence gathering and providing support to its members in the framework of Horizon 2020 programme.



EUROPEAN PROJECTS COORDINATOR

OPTITEC is currently coordinator of COSME Go
International project EU KETs4Dual-Use
(European Key Enabling Technologies for Dual-
Use Worldwide);



Previously, OPTITEC coordinated Horizon 2020 CSA project EPRISE (Empowering Photonics through Regional Innovation Strategies in Europe), FP7 project OASIS (Open the Access to Life Science Infrastructures for SMEs) and participated as a partner in FP7 project LightJumps: European photonics business development accelerator.

CONTACT



TOULOUSE-LABÈGE

Pépinière Prologue 1
815 La Pyrénéenne
31670 Labège , France
+33 (0)6 71 81 07 42



MARSEILLE

c/o LAM
Technopole de Château Gombert
38, Rue Joliot-Curie
13388 Marseille cedex 13, France
+33 (0)4 91 05 59 69



BRUSSELS

62, Rue du Trône
1050 Brussels
Belgique
+33 (0)2 74 18 758