

Pitching session for Collaborative Opportunities

Pitcher: Georgiana





Co-funded by
the European Union



Friend CCI
Create - Connect - Innovate





ITALCAM
CAMERA DI COMMERCIO
ITALO - TEDESCA



France
Clusters

openlub




Co-funded by
the European Union

WHAT IS FRIEND CCI?



Eurocluster between 5 entities from 5 countries:
Romania, Italy, France, Germany, Spain

Acronym for:



Fostering Resilience and Innovation in Europe
through Networking
Development of clusters in the Cultural and
Creative Industry ecosystem



FRIEND CCI EUROCLUSTER IS ONE OF THE 30 EUROCLUSTERS FUNDED UNDER THE COSME SMP PROGRAMME

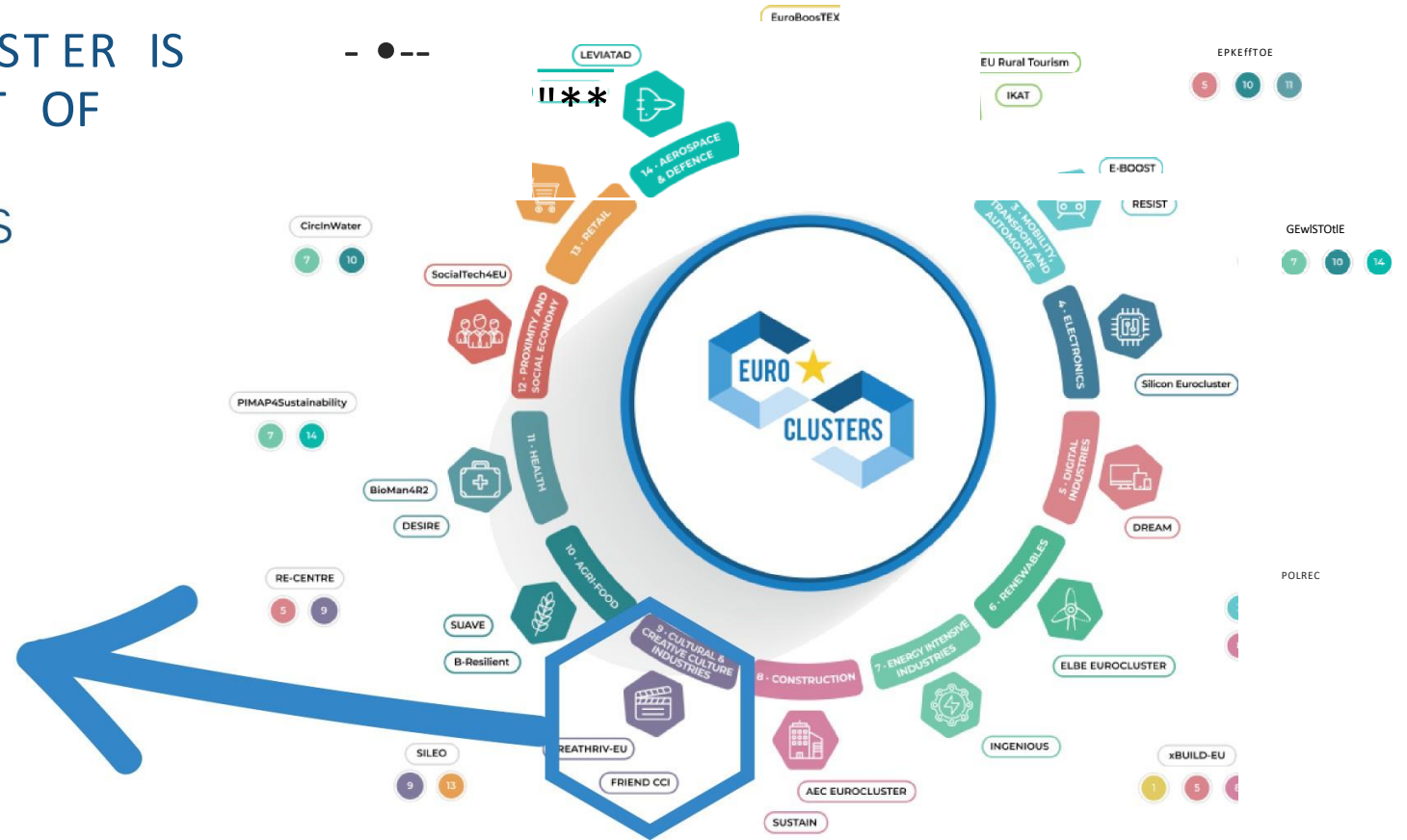


Co-funded by the European Union

FRIEND CCI EUROCLUSTER IS RECOGNIZED AS PART OF THE CREATIVE AND CULTURAL INDUSTRIES ECOSYSTEM



Creative & Cultural Industries



<https://Z7clustercollaboration.eu/7euroclusters>



MEMBERS OF THE FRIEND CCI EUROCLUSTER:

VENETIAN CLUSTER



FRANCE CLUSTERS



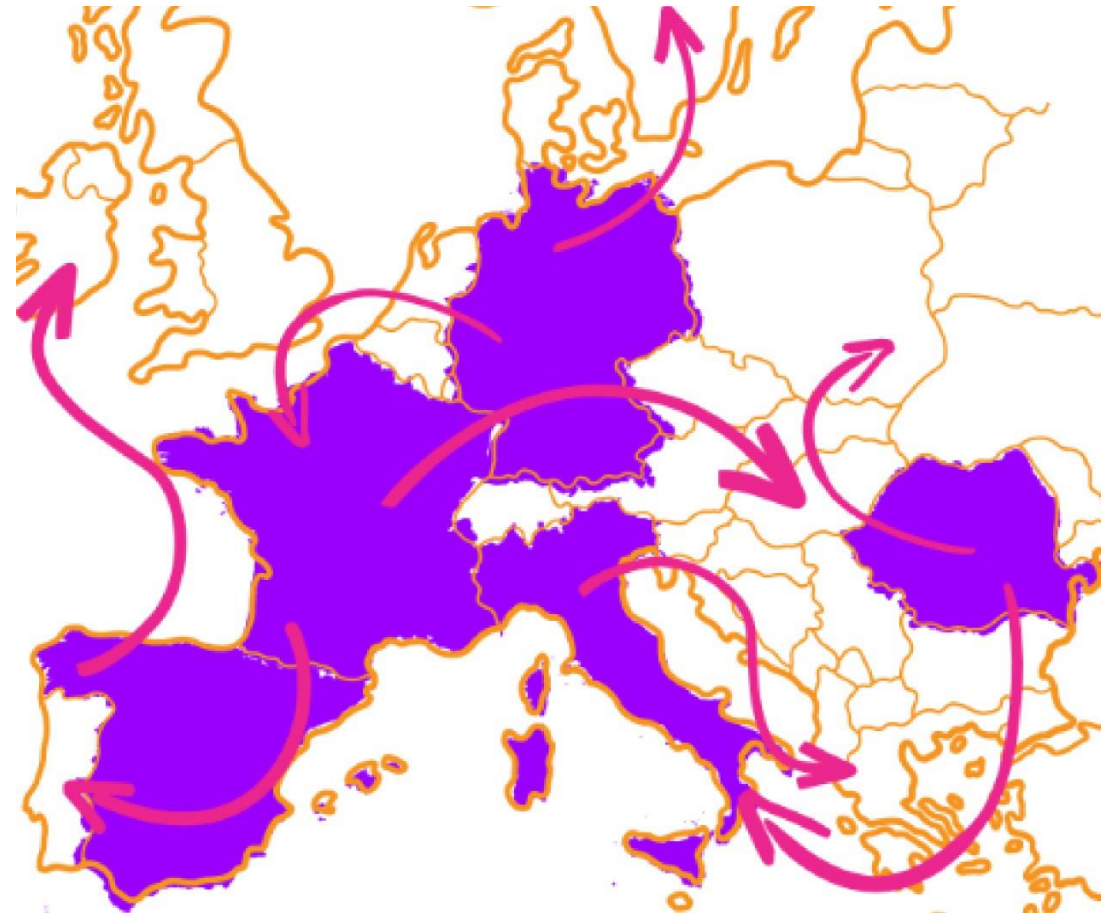
CLUSTER IDIA

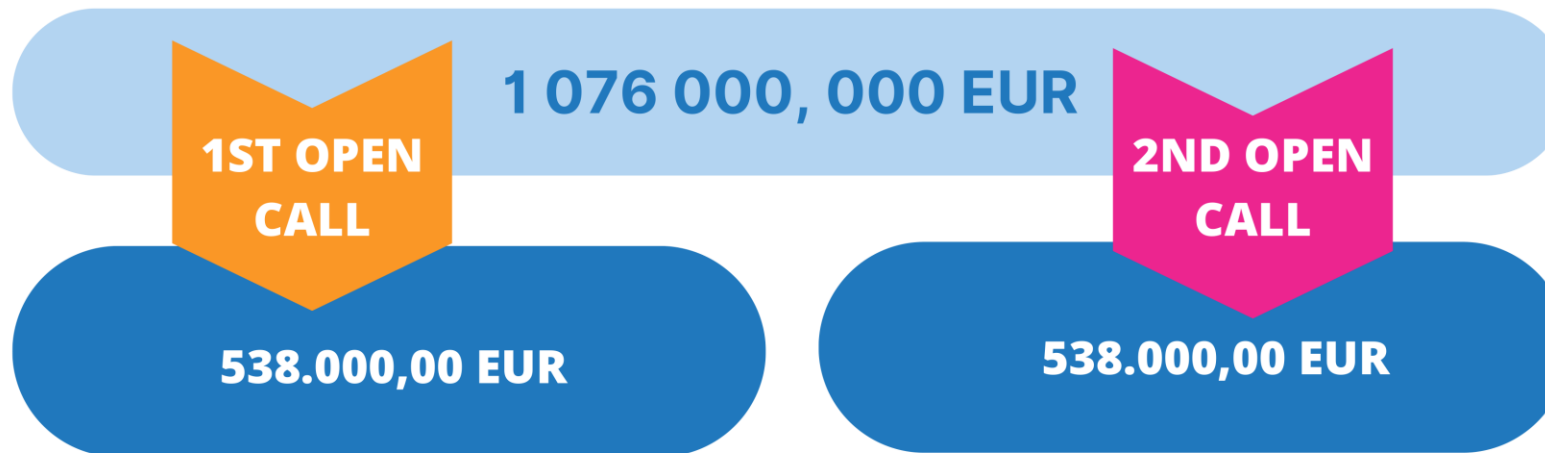


ITALCAM



OPEN HUB CREATIVE CLUSTER



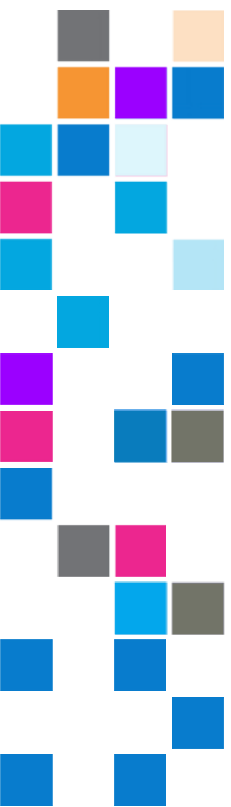


**FINALISED
11 GRANTEES**

OPEN NOVEMBER 2023

**ENDING:
14 JANUARY 2024**

funded at 100%



CALL FOR EXPRESSION OF INTEREST FOR SERVICE PROVIDERS

• CALL

• END

• FOR WHOM
the cci

• SERVICES

- Digital transition
- Green transition
- Internationalisation



CALL STATUS: OPEN

END DATE: 1ST AUGUST 2025

FOR WHOM: companies and entities, including training centers and advisers, that can provide services for the CCI

SERVICES:

- **Digital transition**
- **Green transition**
- **Internationalisation**

CALL FOR EXPRESSION OF INTEREST FOR SERVICE PROVIDERS

BENEFITS:

- ✓ Expansion of your activity in the creative and cultural sectors
- ✓ You can share your expertise with SMEs from diverse fields
- ✓ You can be a service provider for SMEs from other countries



SCAN ME!



Co-funded by
the European Union

CALL FOR PROJECTS OF CULTURAL AND CREATIVE SMES



FINANCIAL SUPPORT FROM FRIEND CCI'S JST SME CALL

TYPE OF SUPPORT: LUMP SUMS

MINIMUM
20.000,00 EUR



MAXIMUM
50.000,00 EUR

funded at 100%



Co-funded by
the European Union

IMPORTANT: AT LEAST 20% OF THE BUDGET OF EACH PROJECT SHOULD BE DEDICATED TO THE SMES FROM THE CCI SECTOR (SEE ANNEX B FOR CCI'S NACE CODES).



ELEGIBILITY CRITERIA



In order to be eligible, the applicants must:

- be legal entities;
- be established in one of the eligible countries, i.e.:
 - o EU Member States (including overseas countries and territories (OCTs))
 - o non-EU countries:
 - listed EEA countries and countries associated to the COSME part of the Single Market Programme.
- **Only SMEs are eligible to apply for the FRIEND CCI open call, by applying as a consortium of SMEs.**

Definitions: For the purpose of this call, SMEs have to be understood as **Small and Medium-sized Enterprises**. According to the European Commission's Recommendation (2003/361/EC), companies shall respect these requirements (see below table).



HOW TO APPLY

The coll for proposals will be published on clustersubmissionplatform.eu in the **Eurocluster Calls** section
You can find all the details about Friend CCI on the euroclusterfriendcci.eu website



SCAN ME



Co-funded by
the European Union

CONTACTS:



OPENHUB CREATIVE CLUSTER

MENTORS:

Marius Geru
Georgiana Mihailovici
Laura Rață
projects@openhub.ro

General inquiries address:

info@euroclusterfriendcci.eu

openh**u**hub





UNIUNEA EUROPEANĂ



Instrumente Structurale
2014-2020

CREATING AN OPEN INNOVATION HUB IN THE SOUTH-EAST REGION (OPENNOHUB)

BUDGET: 6.847.640 RON 1.547.000 EURO
PROJECT DURATION: 15 MONTHS

PROIECT COFINANȚAT DIN FONDUL EUROPEAN DE DEZVOLTARE REGIONAL PRIN PROGRAMUL
OPERATIONAL COMPETITIVITATE 2014-2020 „COMPETITIVI ÎMPREUN



UNIUNEA EUROPEANĂ



Instrumente Structurale
2014-2020

MAIN OBJECTIVE

Increasing the research-development-innovation capacity of the cluster "Open Hub Association", in order to support the provision of competitive products and services on the local and international market, by creating a common research-development-innovation infrastructure for cluster members and by fostering collaborative relationships between them.



SPECIFIC OBJECTIVES

- ✦ Increasing the research and development capacity of cluster members and intensifying innovation activities in the cluster by acquiring an innovation hub space, equipping it with a research and development laboratory and related facilities, 50 pieces of equipment and 5 software packages over a period of 8 months.
- ✦ Stimulating research, development and innovation activities among cluster members by acquiring new capabilities related to knowledge transfer and creating 1 new job for highly qualified staff by the end of the project implementation period.
- ✦ Strengthening collaborative relationships between cluster members to facilitate information exchange and intra—cluster trade flows throughout the project implementation period.
- ✦ Increase the national and international visibility of the cluster "Open Hub Association" through affiliation to at least 2 international cluster associations, participation in 6 internal and international promotion events, with the aim of increasing the competitiveness of the cluster members.

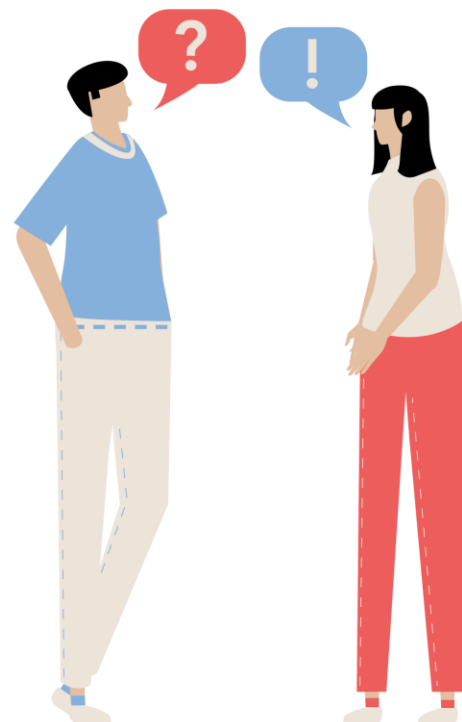


RESULTS:

The main goal of the Open Hub cluster is to support the development of the business sector through excellence in the IT field, with a focus on innovation, aiming to create development opportunities for companies, public and private entities, research centers, and local experts or freelancers.

This will be achieved by fulfilling the project's purpose, within which the following types of activities can be carried out:

- ✦ Accelerators for startups, development of innovative business models;
- ✦ Promotion of information exchange, facilitation of business partnerships, economies of scale through shared use of space and equipment;
- ✦ Providing access (on a subscription, /monthly rental basis) to virtual and physical spaces, specially designed and equipped with modern equipment for outsourcing the digital transformation process.



THANK YOU!

QUESTIONS?